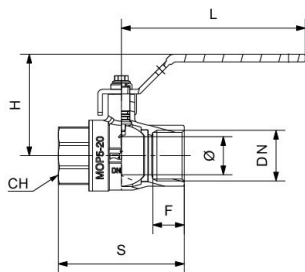




RIV 4192

Ball valve F/F
EN 10226-2 Rc (BSPT) thread
full bore
steel lever handle

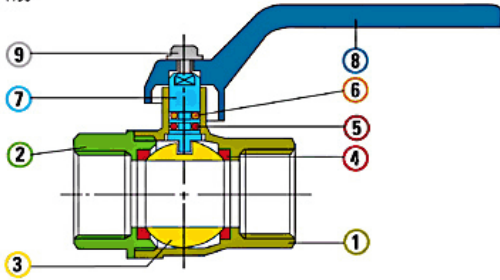
Tech drawings and tables



DN	Code	Ø	H	S	L	F	PN	KG	P/box
1/4"	024192000002	10	44,5	45	80	12,5	64	0,135	30
3/8"	024192000003	10	44,5	45	80	12,5	64	0,136	30
1/2"	024192000004	15	52	59	105	17	64	0,239	10
3/4"	024192000005	20	62	69	120	18	40	0,385	10
1"	024192000007	25	66	83	120	22	40	0,580	10
1"1/4	024192000008	32	78	94	135	24	40	0,897	6
1"1/2	024192000009	40	89	102	160	24	40	1,207	4
2"	024192000011	50	97	124	160	28	40	1,898	4

Technical data

Art. 4190



Materials

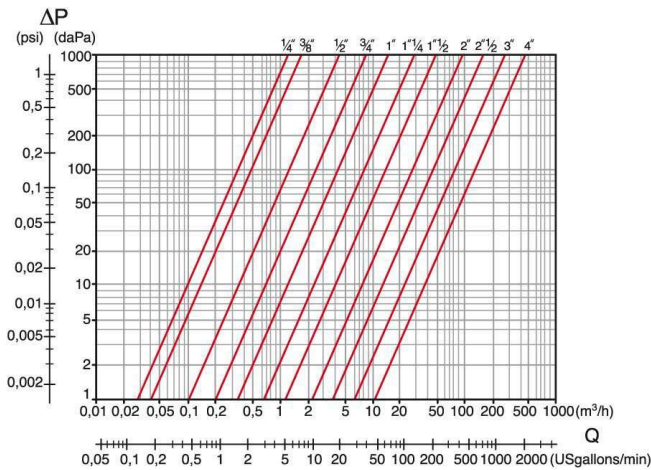
1	Body	Brass	CW617N	Nickel-plated
2	Body end	Brass	CW617N	Nickel-plated
3	Ball	Brass	CW617N	Chrome-plated
4	Seats	P.T.F.E.		
5	O-Ring	FKM		
6	O-Ring	NBR		
7	Stem	Brass	CW614N	
8	Lever	Aluminium		Green
9	Screw	Steel		Zinc-plated

Connections F/F: ISO 7/1Rp (parallel), ISO 7/1Rc (tapered), ANSI B1.20.1 (NPT) - M/F: male ISO 7/1R (tapered), female ISO 7/1Rp (parallel) - M/M: ISO 7/1R (tapered)

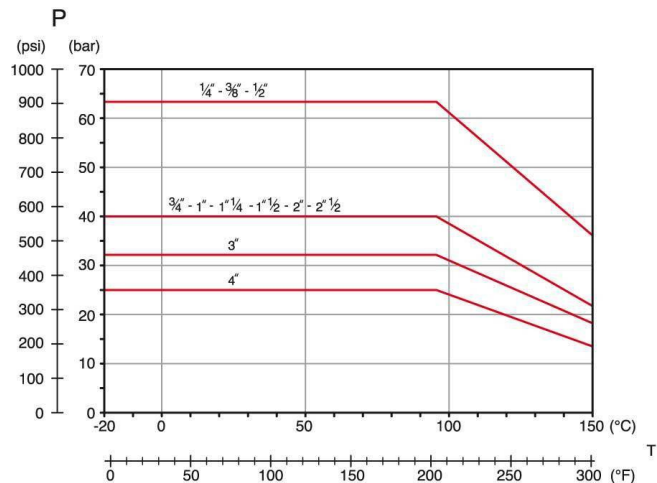
Limit -20°C (without liquid) +150°C

Notes The max.working pressure (PN) means at a room temperature of about 23°C.

Pressure Loss Chart



Temperature/Pressure



Kv & Cv Coefficients

Size	Kv	Cv
1/4"	4,1	4,7
3/8"	6,3	7,3
1/2"	15,5	17,9
3/4"	31,0	36,0
1"	52,0	60,0
1"1/4	100,0	116,0
1"1/2	180,0	206,0
2"	350,0	405,0
2"1/2	350,0	671,0
3"	1000,0	1157,0
4"	1550,0	1793,0